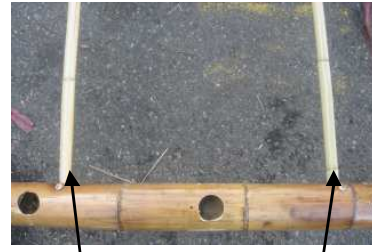


8'/10' Bamboo Bridge

Parts Included:

Bamboo Side Rails- 2
Rolled Bamboo Pathway-1
Bamboo pole bracers-2
Cedar Wood Bracer- 2

1. Insert the bamboo pole bracers into one completed side rail as shown on the right. Make sure the labels match up with the sides. Then the second rail should be unassembled by unscrewing the bolts from each of the eight posts. Set aside the bolts for later installation.



Bamboo Pole Bracers

2. Fit the bamboo path onto the deck. The path may not fit because of the bolts at the ends of the deck have to be lowered. We suggest you use a piece of wood (2 x 4) to prop the deck up and flush even the bolts so that the pathway fits.



Cedar Bracer

3. Complete the left side rail, bolting it in securely. Secure the cedar bracers at the ends as well, making sure the bolt is secure through the matching holes on the bamboo.



